

DRC

NOTES:

PZ25- 12000013

11/05/2025

W/AL SURVEILLANCE (LANDSCAPING)

2.5' TO 2.5' FOOT MAXIMUM HEIGHT FOR ALL HEDGES, BUSHES, LOW PLANTS, AND GROUND COVER.

GOAL: INCREASE VISIBILITY & DETER CONCEALMENT.

2.) MAINTAIN AN 8'- FEET CLEAR TREE TRUNK FOR CANOPY TREES AND TALL PLANTS WITHOUT ANY OBSTRUCTIVE LIMBS OR FOLIAGE HANGING DOWN BELOW 8' FEET THAT WOULD IN THE PRESENT OR FUTURE OBSTRUCT NATURAL &/ OR ELECTRONIC SURVEILLANCE. (NOTE THAT YOUNG IMMATURE TREES WITH 6" INCH OR LESS DIAMETER TRUNKS ARE EXCLUDED FROM THIS CONDITION ONLY WHILE MATURING PER CODE.)  
GOAL: INCREASE VISIBILITY, IMPROVE LINE OF SIGHT & PREVENT OBSTRUCTIONS TO ELECTRONIC SURVEILLANCE & PEDESTRIAN SCALE LIGHTING.

3.) DESIGN IN DENSE & DEFENSIVE, LOW-PROFILE AND/ OR HARSH THORNY-LIKE NON-OBSTRUCTIVE (MAXIMUM HEIGHT 2' TO 2.5' FEET) LANDSCAPING IN ANY VULNERABLE AREAS SUCH AS UNDER WINDOWS, AROUND FENCING OR WALLS, REMOTE PROPERTY LINES, ETC.  
GOAL: DETER LOITERING, TRESPASSING AND TO DENY ANY CONCEALED STAGING AND AMBUSH OPPORTUNITY FOR POTENTIAL MORE SERIOUS CRIMINAL ACTIVITY SUCH AS BURGLARY, ROBBERY, SEXUAL CRIMES, ETC. DO NOT PLACE HEDGES OR PLANTS TOO CLOSE TO FENCES OR WALLS SO THAT IT OBSTRUCTS NATURAL SURVEILLANCE AND RESULTS IN PROVIDING CONCEALMENT/ AMBUSH OPPORTUNITIES.

LIGHTING:

1.) LIGHTING MUST COMPLY WITH THE ILLUMINATING ENGINEERING SOCIETY OF NORTH AMERICA "IESNA" G-1- 2022 "GUIDE FOR SECURITY LIGHTING FOR PEOPLE, PROPERTY, AND CRITICAL INFRASTRUCTURE."

2.) ALL STRUCTURES: INSTALL VANDAL PROOF / RESISTANT MOTION-SENSOR SECURITY ALERT LIGHTS OVER ALL EXTERIOR UNIT DOORS AND OVERHANGS (IF ANY), INCLUDING MAIN, GARAGE, SIDE DOOR GARAGE EGRESS, STORAGE DOORS, STORAGE SHEDS (IF ANY), ETC.  
GOAL: SECURITY MOTION SENSORS ARE VERY EFFECTIVE IN CAPTURING AN INTRUSION AND CREATING THE PERCEPTION BY THE INTRUDER OF BEING DISCOVERED, THEREFORE THESE SHOULD BE UTILIZED IN STRATEGICALLY TARGETED AREAS AFTER CAREFUL CONSIDERATION, ESPECIALLY WITH REGARDS TO ANY BUILDING DESIGN FEATURE AREA THAT HAS AN OVERHANG OR OBSTRUCTIVE FEATURE THAT WOULD ATTRACT LOITERERS, TRESPASSERS, THIEVES, BURGLARS, ROBBERS, ETC., WHO MAY USE THESE AREAS FOR CONCEALMENT, SLEEPING, URINATING, OR AMBUSH IN THE CASE OF MORE SERIOUS CRIMES SUCH AS BURGLARY, ROBBERY, SEXUAL BATTERY, ETC.

3.) SECURITY LIGHTING SHOULD USUALLY BE PRIMARILY CONCENTRATED AT GATEWAYS, DOORWAYS & WINDOWS; IT SHOULD NOT OVER-ILLUMINATE OR CREATE SHADOWS.

4.) TO ENHANCE SECURITY, USE CAREFULLY FOCUSED BRIGHT SOFT LIGHTS WITH SHIELDED FIXTURES TO ELIMINATE GLARE AND UNDESIRABLE LIGHT POLLUTION TRESPASS. LED LIGHTING IS PREFERRED AS IT PROVIDES EXCELLENT COLOR RENDITION FOR NIGHTTIME VISIBILITY.

5.) ADEQUATE SOFT LIGHTING IS PREFERABLE TO HIGH INTENSITY "SPOTLIGHTS" SO AS NOT TO 'BLIND' DESIRABLE USERS AND MAKE THEM PRONE TO SURPRISE HAZARDS SUCH AS AN AMBUSH. WITH SOFT BRIGHT LIGHTING THE FIELD OF VISION IS GREATLY EXTENDED.

6.) LIGHTING PLACEMENT MUST ENHANCE RATHER THAN CONFLICT WITH CAMERA PLACEMENT. AVOID PLACING A LIGHT THAT WOULD CONCENTRATE LIGHT DIRECTLY INTO A CAMERA LENS THEREBY CAUSING INTERFERENCE IN OPERATIONAL EFFICIENCY.

7.) LIGHTING (& CAMERAS) MUST BE STRATEGICALLY PLACED SO THEY WILL NOT BE OBSTRUCTED BY THE GROWTH OF EXISTING, OR INSTALLATION OF FUTURE LANDSCAPING.

SECURITY STRENGTHENING:

1.) FOR COMMERCIAL & INDUSTRIAL, ALL SOLID EXTERIOR DOORS MUST HAVE A SEE-THROUGH REINFORCED SECURITY WINDOW, OR AN AUDIBLE/ VIDEO INTERCOM PAGER SYSTEM INCLUDING SERVICE DOORS, GARAGE, OR BAY DOORS (IF ANY), ETC.  
GOAL: TO PROVIDE AN OPPORTUNITY TO MONITOR AND SURVEIL THE EXTERIOR PRIOR TO EXITING TO AVOID BEING AMBUSHED UPON EXITING. THIS ALSO PROVIDES AN OPPORTUNITY TO VISUALLY IDENTIFY AND SCREEN VISITORS IN THE EVENT OF AN ATTEMPTED CRIMINAL RUSE ENTRY SUCH AS BY A FAKE DELIVERY DRIVER, UPS/ FEDEX, UTILITY WORKER, ETC. CRIMINAL INCIDENTS OF THEFT, BURGLARIES AND ROBBERIES CAN CAUSE EXTREME FINANCIAL LOSS & MAY ALSO HAVE DEADLY CONSEQUENCES, SO STRATEGICALLY PLANNING AND DESIGNING DEFENSES AHEAD OF TIME TO PREVENT OR DETER THESE INCIDENTS IS VITAL FOR SAFETY AND SECURITY.

2.) THE PLACEMENT OF A WINDOW WITHIN A DOOR MUST NOT FACILITATE THE EASY REACH OF THE DOOR'S LOCKING MECHANISMS (I.E. DEADBOLTS, LOCKABLE DOORKNOBS, SLIDE LOCKS, ETC.)  
GOAL: TO AID IN PREVENTING A CRIMINAL OFFENDER FROM GAINING UNLAWFUL FORCED ENTRY. WINDOWS WITHIN ENTRY DOORS SHOULD BE IMPACT RESISTANT &/OR HAVE A SECURITY REINFORCED DESIGN.

3.) DESIGNATED ADA ACCESS RAMPS AND/ OR EXTERIOR PUBLICLY ACCESSIBLE DESIGN FEATURES, WHETHER ELEVATED OR NOT, SUCH AS WALKWAYS, STAIR WELLS, PROMENADES, RAMPS ARE TO UTILIZE SEE THROUGH FENCE RAILING (IF INCORPORATED) FOR IMPROVED NATURAL SURVEILLANCE.  
PURPOSE: SOLID WALLS AND/ OR OTHER RAISED/ ELEVATED OBSTRUCTIVE DESIGN ELEMENT FEATURES SUCH AS WALKWAYS, PROMENADES, RAMPS, WHETHER ADA COMPLIANT OR NOT, ETC., ARE DISCOURAGED AS THEY HINDER VISIBILITY, MAY ENCOURAGE TRESPASSING & PROVIDE CONCEALMENT FOR OTHER TYPES OF CRIMINAL ACTIVITY I.E.: LOITERING, VANDALISM (GRAFFITI), NARCOTIC USE, AMBUSH ATTACK, ETC., AND RESULT IN HIGHER MAINTENANCE COSTS.

4.) ANY RECESSED AREAS ON THE EXTERIOR OF THE STRUCTURE THAT ARE PUBLICLY ACCESSIBLE, SUCH AS ALCOVES, GROUND LEVEL PATIOS / BALCONIES, ETC. ESPECIALLY THOSE WITH DOORS THAT ENTER / EXIT THE BUILDING, SHOULD BE DESIGNED OUT, OR IF THEY ARE A NECESSARY ELEMENT OF THE DESIGN, THEY MUST HAVE SECURITY FEATURES SUCH AS CAMERAS, CONVEX MIRRORS, DOOR WINDOWS, MOTION SENSOR SECURITY LIGHTS, SEE THROUGH PICKET STYLE FENCING WITH LOCKABLE GATES, ETC. NOTE THAT RECESSED BUILDING FACADES FREQUENTLY ATTRACT UNINTENDED LOITERERS, TRESPASSERS, AND CRIMINALS DUE TO PROTECTION FROM THE WEATHER, AND OPPORTUNITY FOR CONCEALMENT/ AMBUSH. ALSO, NEIGHBORS, SECURITY AND POLICE PATROLS OFTEN CANNOT OBSERVE ANYONE POSSIBLY A THREAT WHO IS TUCKED INSIDE A RECESSED ALCOVE.  
GOAL: TO INCREASE THE OVERALL NATURAL SURVEILLANCE & TO DETER CONCEALMENT, AMBUSH, TRESPASSING, LOITERING, UNINTENDED USE, ETC.

5.) DESIGN OUT EXISTING OR POTENTIAL CONCEALMENT & AMBUSH POINTS TO DETER / PREVENT VIOLENT CRIMINAL ACTS & CRIMINAL ACTIVITY.

A3. ELECTRONIC SURVEILLANCE - SECURITY STRENGTHENING

\*\*\* ATTENTION \*\*\*  
PROPOSED CAMERA AND MONITORING LOCATIONS WILL BE COORDINATED WITH A SECURITY AND ACCESS CONTROL CONSULTANT AND THE BROWARD SHERIFF'S OFFICE CPTED REVIEWER \*\*\* PRIOR \*\*\* TO PERMITTING. PLANNING AND INSTALLATION OF THE SURVEILLANCE MONITORING SYSTEM MUST INCLUDE FIELD INPUT FROM EXPERIENCED CPTED/ SECURITY STRENGTHENING LAW-ENFORCEMENT TO PROVIDE OPTIONS TO CONSIDER TO AID IN ENSURING OPTIMAL RESULTS.

1.) REQUIRED TO MEET § 115.26 - CITY OF POMPAÑO BEACH BUSINESS SECURITY CODE: "... USE SECURITY CAMERAS TO PROTECT EMPLOYEES AND THE CONSUMER PUBLIC FROM ROBBERY, BURGLARY AND OTHER VIOLENT CRIMES."

2.) INSTALL VIDEO SURVEILLANCE OF ALL COMMERCIAL WHOLESALE AND RETAIL BUSINESSES.

3.) ELECTRONIC SURVEILLANCE CAMERAS MUST BE STRATEGICALLY LOCATED FOR MAXIMUM ACTIVE AND PASSIVE OBSERVATION. SHOW SIGHT "CONES" INDICATING COMPREHENSIVE COVERAGE.

4.) SURVEILLANCE MONITORS DEPICTING REAL TIME SECURITY CAMERA VIEWS MUST BE STRATEGICALLY LOCATED FOR MAXIMUM OVERLAPPING ACTIVE AND PASSIVE OBSERVATION.  
GOAL: PLACEMENT OF MONITORS IN STRATEGIC LOCATIONS INCREASES VALUABLE SURVEILLANCE AND EXPEDITES REPORTING OF SUSPICIOUS OR ILLEGAL ACTIVITY INCLUDING DANGEROUS OFTEN CRITICAL INCIDENTS SUCH AS ACTIVE KILLERS, ETC. LARGE MONITORS ARE RECOMMENDED FOR OPTIMAL VIEWING. THEY SHOULD BE PLACED STRATEGICALLY WHEREVER THEY WOULD RECEIVE THE MOST VIEWING FROM PERSONNEL TRAFFIC SUCH AS AT THE FRONT DESK, LOBBIES, THE MANAGERS' OFFICE, ETC.

5.) ALL CAMERAS WILL BE STRATEGICALLY PLACED SO THEY WILL NOT BE OBSTRUCTED BY THE GROWTH OF EXISTING OR INSTALLATION OF FUTURE LANDSCAPING.

6.) LIGHTING PLACEMENT WILL ENHANCE RATHER THAN CONFLICT WITH CAMERA PLACEMENT. AVOID PLACING A LIGHT THAT WOULD CONCENTRATE LIGHT DIRECTLY INTO A CAMERA LENS THEREBY CAUSING INTERFERENCE IN OPERATIONAL EFFICIENCY.

7.) SECURITY CAMERAS MUST FULLY VIEW ALL PARKING AREAS, BUILDING ENTRANCES AND PEDESTRIAN PATHS OF TRAVEL ALONG AND UP TO THE BUILDING PERIMETERS.

8.) ANY POTENTIALLY VULNERABLE AREAS THAT CANNOT BE OBSERVED THROUGH NATURAL SURVEILLANCE MUST BE COVERED BY ELECTRONIC SURVEILLANCE MONITORING. SUCH AREAS CAN INCLUDE, BUT ARE NOT LIMITED TO: MEETING ROOMS, EMPLOYEE BREAKROOMS, CUSTOMER WAITING ROOMS, INTERIOR & EXTERIOR COMMON AREAS, ETC.

9.) ENSURE VIDEO SURVEILLANCE AT ALL EXTERIOR BUILDING ENTRANCES. INCLUDE AN AUDIBLE/ VIDEO INTERCOM AND CALL SYSTEM FOR EXAMPLE AT THE MAIN ENTRANCE.

10.) INSTALL MOTION ACTIVATED SECURITY CAMERAS UP TO AND AT THE PERIMETER BOUNDARIES, THE PARKING AREAS, AND ACTIVITY AREAS SUCH AS ANY EXTERIOR AMENITY AREAS TO DETER CRIMINAL ACTIVITIES SUCH AS BURGLARY, VANDALISM, AUTO-THEFT, ROBBERY, SEXUAL ASSAULT & BATTERY, ETC.

11.) DESIGNATED VEHICLE PARKING AREAS HAVE ONE OF THE HIGHEST CRIME RATES THEREFORE SECURITY VIDEO SURVEILLANCE COVERAGE MUST BE COMPREHENSIVE WITH OVERLAPPING SIGHT CONES & ENSURING THERE WILL BE NO GAPS IN COVERAGE.  
GOAL: VIOLENT CRIMES AGAINST PEOPLE AS WELL AS VEHICLE BURGLARIES, THEFTS & OTHER TYPES OF CRIMES FREQUENTLY OCCUR IN PARKING AREAS. HAVING FULL & THOROUGH VIDEO SURVEILLANCE COVERAGE IS AN IMPORTANT DETERRENT & IS VALUABLE INVESTIGATIVE RESOURCE THAT LAW ENFORCEMENT OFTEN USES TO QUICKLY IDENTIFY SUSPECTS & SOLVE CRIMES MORE RAPIDLY.

B. ACCESS CONTROL - SECURITY STRENGTHENING

1.) WAYFINDING & INSTRUCTIONAL SIGNAGE MUST BE PROMINENTLY DISPLAYED & POSTED WHERE NECESSARY.  
EXAMPLES OF SIGNAGE CAN INCLUDE, BUT ARE NOT LIMITED TO: MAIN ENTRANCE, EMERGENCY EXIT, PRIVATE PROPERTY, RESTRICTED ACCESS, EMPLOYEES ONLY, NO ADMITTANCE, NO TRESPASSING, VISITOR / GUEST PARKING, ONE WAY TRAFFIC, NO THRU TRAFFIC, PEDESTRIAN CROSSING, HOURS OF OPERATION, RULES & REGULATIONS, DO NOT ENTER, MAXIMUM OCCUPANCY, EVACUATION ROUTE, ETC.

2.) ALL EXTERIOR DOORS MUST HAVE NON-REMOVABLE DOOR HINGE PINS, AND IT IS RECOMMENDED TO INCLUDE THE CAPACITY FOR ELECTRONIC DOOR POSITION SWITCHES TO SIGNAL A SECURITY ALARM SYSTEM THAT A DOOR, WHICH SHOULD NOT HAVE BEEN OPENED, HAS BEEN OPENED AND BREACHED. OCCUPANTS OR THE ALARM COMPANY WILL THEN INVESTIGATE AND/ OR ADDRESS ANY EMERGENCY ACCORDINGLY.

3.) FOR COMMERCIAL AND INDUSTRIAL: INSTALL HARD-WIRED BURGLAR SECURITY ALARMS AND SAFES AT ANY COMMERCIAL PROPERTY, RETAIL BUSINESSES AND RESIDENTIAL MANAGEMENT OFFICES, AND/ OR WHEREVER VALUABLES OF ANY KIND ARE STORED SUCH AS CASH, JEWELRY, ELECTRONIC EQUIPMENT SUCH AS COMPUTERS, MONITORS, AND ANY OTHER COSTLY INVENTORY, INCLUDING POTENTIALLY SENSITIVE OR PERSONAL OR BUSINESS IDENTIFICATION DOCUMENTS, ELECTRONIC FILES OR FINANCIAL INFORMATION ETC., THAT ARE FREQUENTLY TARGETS OF THEFT, FRAUDS, BURGLARIES AND ROBBERIES. ALARMS MUST BE MONITORED AND ACTIVATED WHENEVER BUSINESSES ARE CLOSED, OR ALL PERSONNEL ARE OUT OF THE BUILDING OFFICES. NOTE THAT WIFI ALARM SIGNALS CAN BE JAMMED WITH EASILY OBTAINABLE EQUIPMENT THEREBY LEAVING PROPERTIES VULNERABLE TO BURGLARIES WITHOUT ANY ALARM PROTECTION.

4.) FOR COMMERCIAL AND INDUSTRIAL: BURGLARY / INTRUSION / SENSOR ALARMS MUST BE ACTIVATED WHENEVER THE BUSINESS IS CLOSED, OR ALL AUTHORIZED PERSONNEL ARE OUT OF THE BUSINESS.

5.) FOR COMMERCIAL INCLUDING COMMERCIAL / INDUSTRIAL / RESIDENTIAL/ HOTELS/ RETAIL / MULTI-FAMILY WITH SECURITY/ FRONT DESK RECEPTIONISTS / HOSTS (IF ANY): AREAS DESIGNATED FOR EMPLOYEE & CUSTOMER TRANSACTIONS SUCH AS A RECEPTION DESK, COUNTER TOPS, PODIUM, &/OR BAR MUST BE DESIGNED WITH A CLEAR BOUNDARY DELINEATION &/OR ENCLOSURE SEPARATING PUBLIC FROM PRIVATE AREAS. EXAMPLES WOULD BE APPROPRIATE SIGNAGE AND A PHYSICAL BARRIER SUCH AS A DOOR, OR AT LEAST A STANCHION WITH A CHAIN OR ROPE DELINEATING THE PRIVATE NON-PUBLIC AREA AS OFF-LIMITS.

PURPOSE: TO DETER THE ACCIDENTAL OR INTENTIONAL TRESPASS INTO A RESTRICTED AREA, TO PROTECT EMPLOYEES & TO PREVENT UNAUTHORIZED PERSONS FROM GAINING ACCESS TO PROPERTY, VALUABLES, SENSITIVE EQUIPMENT, ETC. ALSO, TO SIGNAL AN EARLY ALERT TO EMPLOYEES IF SOMEONE UNAUTHORIZED IS ATTEMPTING TO BREACH THE PRIVATE NON-PUBLIC AREA SO THEY CAN BUY TIME TO QUICKLY GET TO SAFETY AND ALERT SECURITY/ POLICE FOR HELP.

6.) ANY EXISTING OR FUTURE FENCING ANYWHERE ON THE SITE SHOULD BE CPTED ORIENTED SUCH AS METAL RAIL BARS WITH 'SEE-THROUGH' SPACING TO MAINTAIN CRITICAL NATURAL SURVEILLANCE. NOTE THAT HOLLOW ALUMINUM IS WEAK & IS EASILY BENT/ PRIED TO FACILITATE CLIMBING THROUGH SO STEEL IS MUCH PREFERRED.

7.) FENCES SHOULD NOT HAVE EASILY ACCESSIBLE HORIZONTAL BARS THAT COULD BE USED TO FACILITATE CLIMBING OVER & BREACHING ANY SECURITY FENCING. USE NARROW SPACING BETWEEN VERTICAL BARS TO PREVENT PROVIDING FOOTHOLDS.

8.) DO NOT BLOCK THE NATURAL SURVEILLANCE BENEFIT OF CPTED 'SEE-THROUGH' FENCING BY PLACING HIGH OBSTRUCTIVE OBJECTS, LANDSCAPING HEDGES OR GROUND COVER PLACED CLOSELY ON EITHER SIDE OF IT. ANY LANDSCAPING IN FRONT OF FENCING SHOULD BE LOW GROUND COVER WITH A MAXIMUM HEIGHT OF 2' TO 2.5' FEET, PREFERABLY USE HARSH TERRITORIAL REINFORCEMENT TYPE LANDSCAPING TO STRENGTHEN THE FENCE PERIMETER ACCESS CONTROL BARRIER.

B1. ACCESS CONTROL - SECURITY STRENGTHENING FOR DUMPSTER ENCLOSURES

1.) TO DETER LOITERING BY TRESPASSERS, ILLEGAL DUMPING AND A CONCEALMENT / AMBUSH POINT FOR CRIMINALS, DUMPSTER ENCLOSURES WITH ROLLING OR SWING GATES, INCLUDING THOSE THAT ALSO HAVE A DESIGNATED PEDESTRIAN ENTRY PASSAGEWAY, MUST INCLUDE ALL THE FOLLOWING FOR BOTH THE SWING AND PEDESTRIAN GATES:

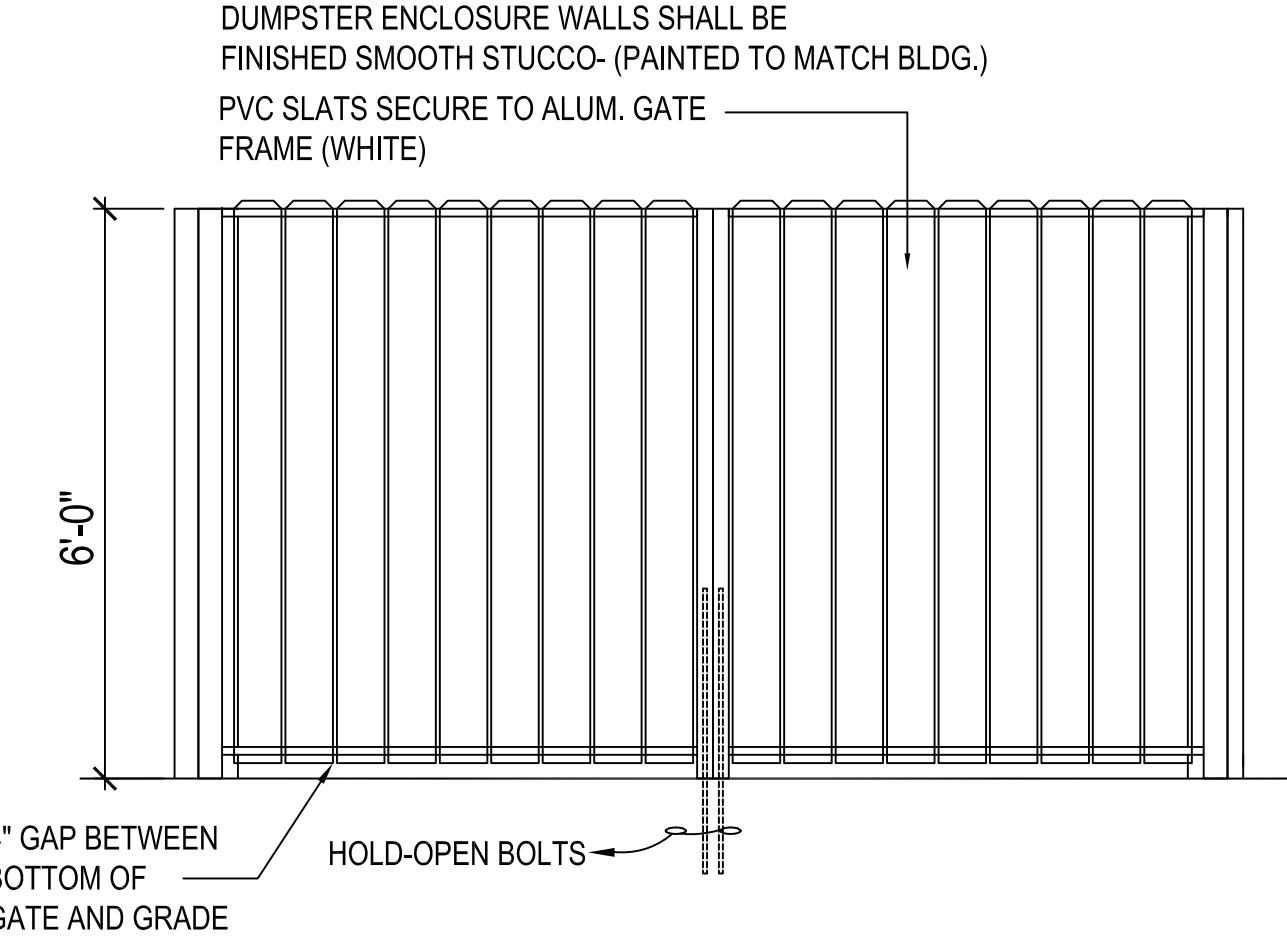
2.) A ROBUST LOCKING MECHANISM SUCH AS A THROW BOLT WITH A ROBUST SHIELDED PADLOCK FOR EXAMPLE RATHER THAN ONLY A VULNERABLE CHAIN AND NON-SHIELDED PADLOCK.

3.) BOTTOM GATE CLEARANCES MUST BE 8" ABOVE THE GROUND.  
PURPOSE: FOR VIEWING UNDERNEATH TO DETER LOITERING AND TRESPASSING INSIDE THE ENCLOSURES, AND TO DETER/ PREVENT THE ENCLOSURE FROM BEING USED AS CONCEALMENT/ AMBUSH FOR A MORE SERIOUS CRIME SUCH AS A VIOLENT ROBBERY, SEXUAL ASSAULT/ BATTERY, ETC.

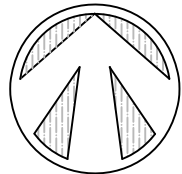
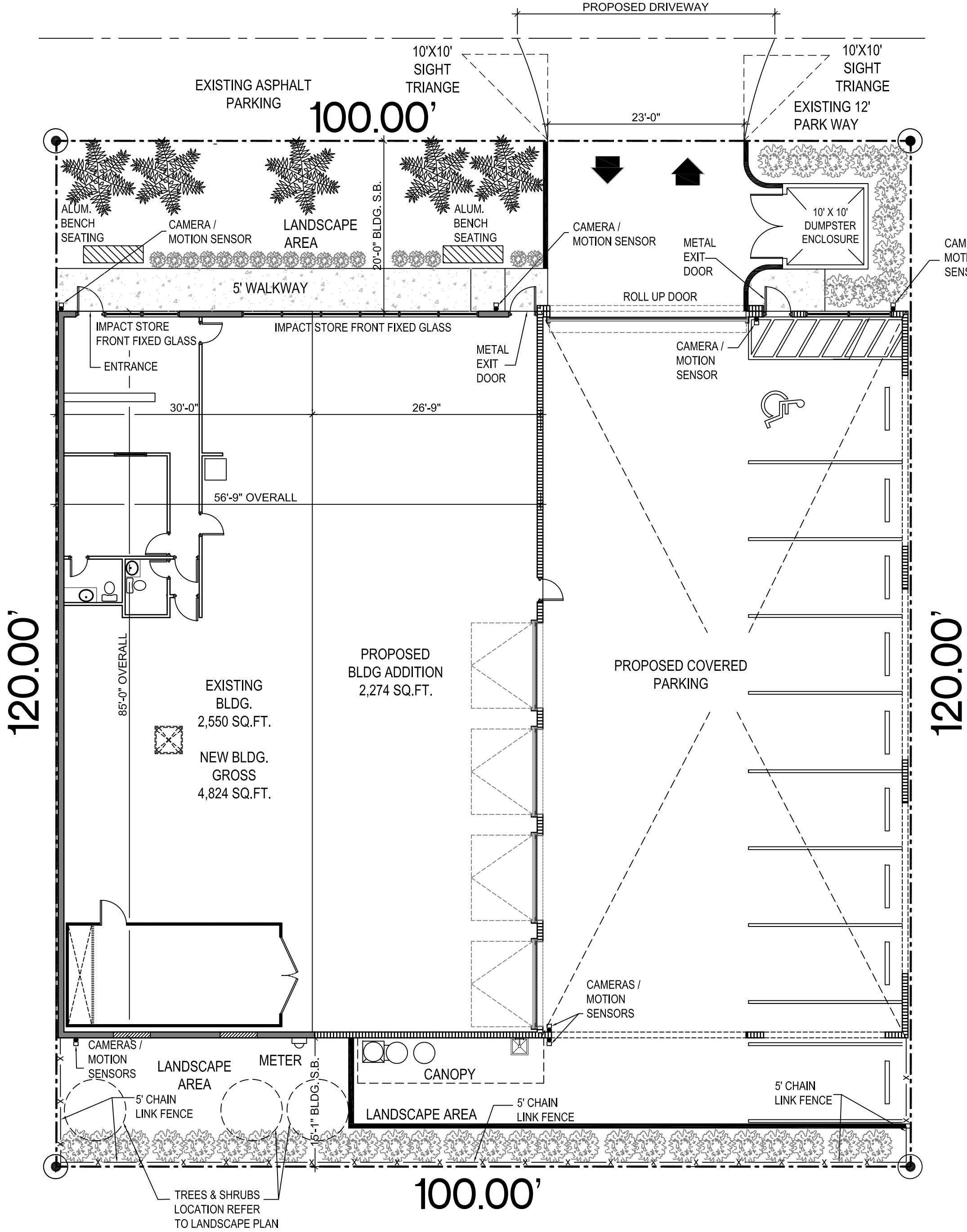
4.) IF THERE IS A PEDESTRIAN PASSAGEWAY INTO THE DUMPSTER ENCLOSURE IT MUST HAVE THE LOCKABLE GATE WHICH REMAINS CLOSED AND LOCKED EXCEPT WHEN IN ACTIVE USE BY AUTHORIZED PERSONS.

5.) DUMPSTER AREA MUST HAVE A VANDAL RESISTANT/ PROOF MOTION-SENSOR SECURITY LIGHT TO ILLUMINATE THE AREA WHEN IN USE BETWEEN SUNSET AND SUNRISE.

6.) DUMPSTER AREAS MUST BE SECURED WITH ACCESS SINCERELY,



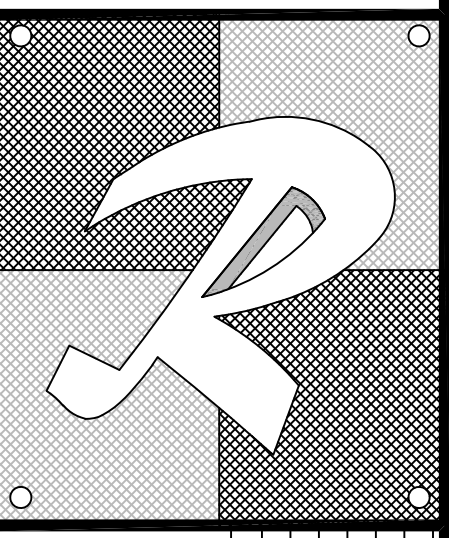
DUMPSTER ENCLOSURE ELEVATION



CRIME PREVENTION PLAN

SCALE: 1/8" = 1'-0"

ALL IDEAS, DESIGNS, ARRANGEMENTS, AND PLANS INDICATED OR REPRESENTED BY THIS DRAWING ARE OWNED BY, AND THE PROPERTY OF RAMOS ARCHITECTS & ASSO. AND WERE CREATED, EVOLVED AND DEVELOPED FOR USE ON, AND IN CONNECTION WITH THE SPECIFIED PROJECT. NONE OF SUCH IDEAS, DESIGNS, ARRANGEMENTS OR PLANS SHALL BE USED BY OR DISCLOSED TO ANY PERSON, FIRM OR CORPORATION FOR ANY PURPOSE WHATSOEVER WITHOUT THE WRITTEN PERMISSION OF RAMOS ARCHITECTS & ASSOCIATES. WRITTEN DIMENSIONS OF THESE DRAWINGS SHALL HAVE PRECEDENCE OVER SCALED DIMENSIONS. CONTRACTORS SHALL VERIFY, AND BE RESPONSIBLE FOR ALL DIMENSIONS AND CONDITIONS ON THE JOB AND THIS OFFICE MUST BE NOTIFIED OF ANY VARIATIONS FROM THE DIMENSIONS AND CONDITIONS SHOWN BY THESE DRAWINGS. SHOP DETAILS MUST BE SUBMITTED TO THIS OFFICE FOR APPROVAL BEFORE PROCEEDING WITH FABRICATION. ALL RIGHTS RESERVED © 2025.



PROPOSED BLDG. ADDITION & PARKING FOR:

50 S.W. 5TH STREET

50 S.W. 5TH STREET POMPAÑO BEACH, FL 33060

Ramos Architects & Associates

780 TAMiami CANAL ROAD MIAMI, FL 33144

3051 506-7388

SEAL:

ARCHITECT OF RECORD  
JOSE RAMOS | FLA. REG. AR11115 | AAC1595

DATE: 02/20/25  
09/30/25

PROJECT NUMBER  
24151

SHEET  
CP